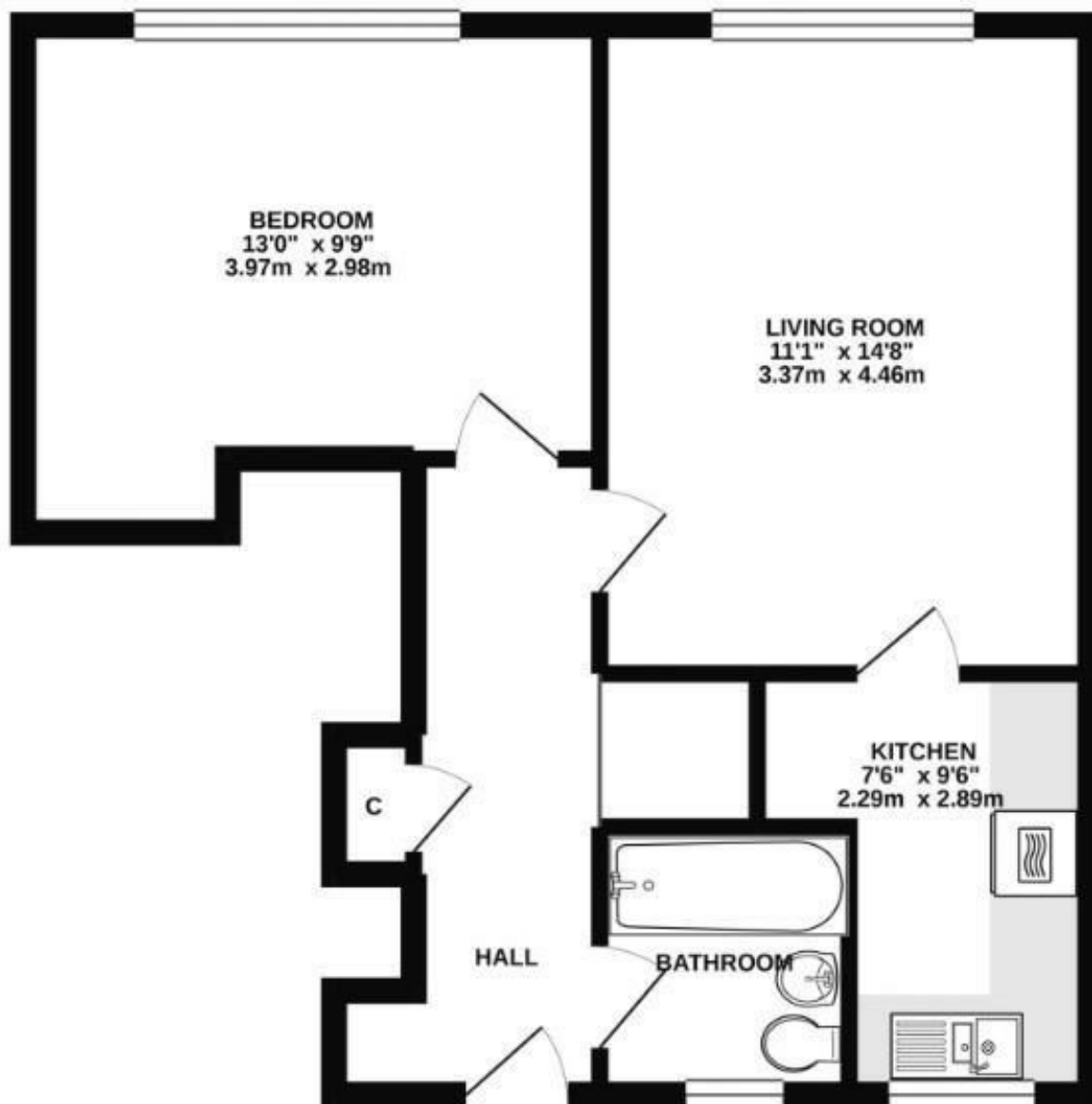





Pine Green | Great Yarmouth | NR31  
 £81,000

abbotFox

GROUND FLOOR  
 495 sq.ft. (46.0 sq.m.) approx.



Energy Efficiency Rating		
	Current	Potential
<i>Very energy efficient - lower running costs</i>		
(92 plus) <b>A</b>		
(81-91) <b>B</b>		
(69-80) <b>C</b>		
(55-68) <b>D</b>		
(39-54) <b>E</b>		
(21-38) <b>F</b>		
(1-20) <b>G</b>		
<i>Not energy efficient - higher running costs</i>		
<b>England &amp; Wales</b>	EU Directive 2002/91/EC 	

Disclaimer – In accordance with the Property Misdescriptions Act, the company gives notice that all descriptions, references to condition, necessary permissions for use and other details are given in good faith and believed to be correct, but any intending lessees do not rely on them as statements of fact, but must satisfy themselves by inspection or other means, as to their accuracy.



abbotFox presents this ground floor, one bedroom apartment. Situated within easy reach of a wealth of local amenities, this property affords a high degree of convenience. Accommodation comprises; entrance hall, lounge diner, kitchen double bedroom and bathroom. An ideal opportunity for any first time buyer or buy-to-let investor an internal viewing comes highly recommended.

Agents note: Please be aware the lease length, service charges and ground rent are yet to be confirmed.

